

# KANSAS

## Career Pipeline

Career, Job & Education Planning

Available Sept. 1st  
[www.kansascareerpipeline.org](http://www.kansascareerpipeline.org)

The *Kansas Career Pipeline* is your online location for career, job, education, planning, and training resources designed for Kansas.

### What is the Kansas Career Pipeline?

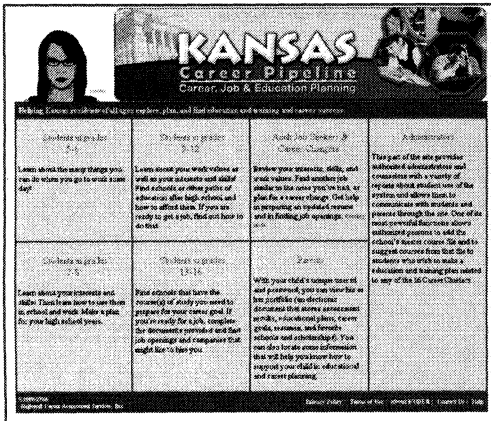
The *Kansas Career Pipeline* ([www.kansascareerpipeline.org](http://www.kansascareerpipeline.org)) is a comprehensive, Internet-based educational and career assessment tool that allows students and adults across the state to have access to the educational, postsecondary, and career planning resources needed to prepare them for a lifetime of success.

Participants will discover their interests, learn about careers, plan for education, and ultimately connect with employers. Everything they need is combined into one easy-to-use, **FREE** system for all residents of Kansas.

### Who can take part in the Kansas Career Pipeline?

Thanks to the support of collaborating agencies and organizations, the *Kansas Career Pipeline* is available to all residents within the state of Kansas.

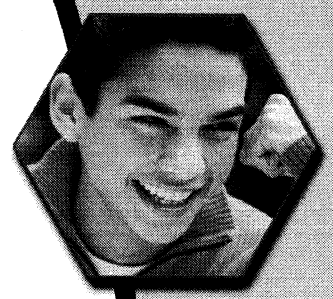
- Students
- Parents
- Military Personnel
- Persons with Disabilities
- Counselors
- Adult Job Candidates
- Employers
- Policy- & Decision-makers
- Teachers
- Adults in Career Transitions
- Retirees



### Kansas Career Pipeline aims to:

- Connect a variety of career exploration, planning, and management resources to all Kansans
- Support partnerships among secondary schools, postsecondary institutions, business and community organizations, and state agencies
- Relate the results of inventories that measure interests, skills, and work values to educational and training options and occupations
- Facilitate development of four- or six-year educational plans and professional resumés

- Organize available exploratory experiences such as job shadowing, field trips, internships, and volunteer activities
- Create an awareness of high-demand Kansas occupations



# KANSAS

## Career Pipeline

Career, Job & Education Planning

PARENTS

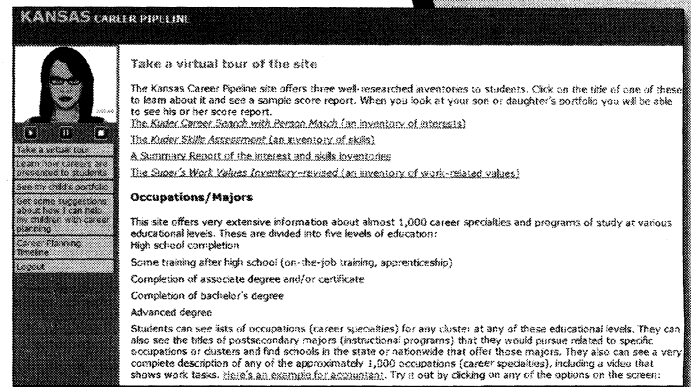
www.kansascareerpipeline.org

### WHAT IS THE KANSAS CAREER PIPELINE?

Studies underscore the fact that parents are the #1 influence in their child's career planning. The *Kansas Career Pipeline* supports parents in that critical role by providing ways to get involved and be informed about their child's education and career planning.

The system facilitates active engagement by students of all ages; it creates a "spark" for the learning and self-assessment that are essential to the successful creation of their own educational and career roadmap.

This unique system will provide research-based assessments that determine personal career interests, skills, and work values, and allows your child to explore the educational and occupational options best related to their assessment results. The system is colorful, visual, and interactive; making career planning interesting and fun.



### THE SYSTEM ALLOWS PARENTS TO:

#### Take a Virtual Tour

The *Kansas Career Pipeline* allows parents to read about and view aspects of key resources within the system - such as assessment results, occupations, and the postsecondary school search. The purpose of the tour is to acquaint parents with the comprehensive content of the system so they will encourage their children to use it.

#### Explore Career Options

The *Kansas Career Pipeline* introduces students to the world of work in a fun and interactive manner. Parents can walk through the interactive model to explore the six broad career fields and 16 Career Clusters. These provide information that is available about each career, including descriptions, career pathways, careers and majors within the pathways, and postsecondary schools that offer selected majors.

#### See My Child's Portfolio

Parents can access their child's portfolio if the child releases his or her unique user name and password. With this access, parents can view assessment results, education plans, resumés, and items saved as favorites such as careers, postsecondary schools and majors, and scholarships. Parents can use this information to help their child make postsecondary and career decisions.

#### See a Timeline for my Child's Educational and Career Planning

The *Kansas Career Pipeline* allows parents to review a planning timeline of important educational and career planning events. This is the same timeline that students can access for guidance starting from kindergarten through adulthood.

#### How Can I help my Child with Career Planning?

There are also a number of outside resources to help parents get involved with their children's career planning. The *Kansas Career Pipeline* has been specifically designed to increase parental involvement with a child's career planning and college preparation through online accessibility of assessment results, portfolio progress, and college and career exploration.



302 Visions Parkway • Adel, IA 50003  
877.999.6227 • support@kuder.com

FORM: 0055 8/07

# KANSAS

## Career Pipeline

Career, Job & Education Planning

STUDENTS

Available Sept-1st  
[www.kansascareerpipeline.org](http://www.kansascareerpipeline.org)

### WHAT IS THE KANSAS CAREER PIPELINE?

The *Kansas Career Pipeline* ([www.kansascareerpipeline.org](http://www.kansascareerpipeline.org)) provides a variety of resources for students to explore and plan for postsecondary transitions and careers. Designed to guide students through the career planning process, the system provides students (Grades 5 through 16) with career awareness, eases middle school students into college and career exploration, allows high school students to prepare for postsecondary transitions, and equips postsecondary students for the workforce.

### 5th - 6th Graders: Awareness

The *Kansas Career Pipeline* encourages 5th and 6th grade students to begin broad exploration of careers and the world of work. Students will gain information about the six career fields and review a small set of occupations in each field.

### 7th - 8th Graders: Exploration

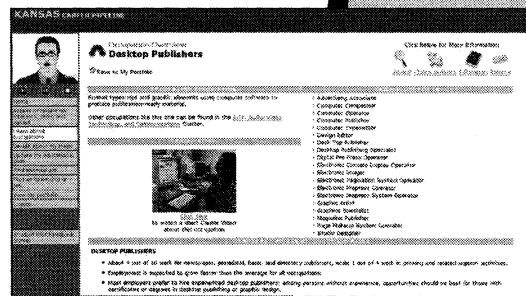
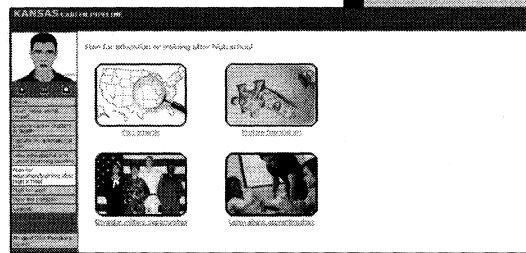
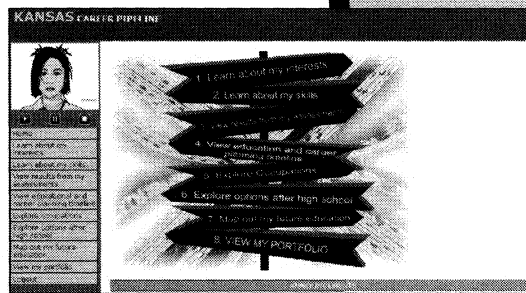
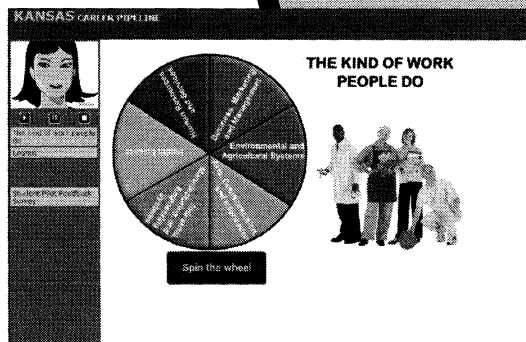
For 7th and 8th grade students, the *Kansas Career Pipeline* opens the door for detailed exploration. The system expands beyond awareness and allows students to browse the 16 Career Clusters. Students can learn about their interests and skills, find out how these relate to occupations, and begin laying out an education plan for future coursework. Additionally, system users, beginning in the 7th grade, can build a lifelong career portfolio, where they can store, view, and edit information easily.

### 9th - 16th Grade: Preparation

Whether high school students are preparing for postsecondary opportunities or college students are looking for tools to prepare for the workforce, the *Kansas Career Pipeline* has the resources to help. Students can apply what they have learned through the *Kansas Career Pipeline* to prepare for these critical transitions.

The system offers the most comprehensive resources for high school and college students including:

- In-depth career cluster and occupational information
- Research-based interests, skills, and work values inventories
- Postsecondary school, apprenticeship, and military information
- Financial aid and scholarship opportunities
- Resumé builder, job interview tips, and career search
- Career portfolio for storing and editing education plans, resumé, web sites, and favorite colleges, careers, clusters, and more



302 Visions Parkway • Adel, IA 50003  
 877.999.6227 • support@kuder.com

FORM: 0053 8/07

Please follow the login instructions below to begin using the *Kansas Career Pipeline*. Customer Support is available at 877.999.6227 or [support@kuder.com](mailto:support@kuder.com).

### Registration

- Step 1:** Go to [www.kansascareerpipeline.org](http://www.kansascareerpipeline.org).
- Step 2:** Click on the type of user that best describes you:
- a. Students in Grades 5-6
  - b. Students in Grades 7-8
  - c. Students in Grades 9-12
  - d. Students in Grades 13-16
  - e. Parents
- Step 3:** New users register by selecting **New Users Register Here**. (*Returning users may enter in their user name and password, and click Login.*)
- If you are a new user, indicate the type of user that best describes you. If you are selecting Student, choose a grade level from the drop down menu.
- a. **5-6 Graders:** You will not log in. Explore the six career fields and the kind of work people do.
  - b. **7-16 Graders:** Create a unique user name and password. Be sure to write down your user name and password in the spaces below.
  - c. **Parents:** You will not log in. Take a virtual tour, learn about career exploration, review a planning timeline, and get suggestions on how to help with career planning. You can also view your child's portfolio, if they have provided you their user name and password.

User Name: \_\_\_\_\_

Password: \_\_\_\_\_

School Access Code: 13124

School Zip Code: 67877

- Step 4:** As a new user, complete the registration information and then click Register.

### Take An Assessment

- Step 5:** 7-8 Graders: Select the **Learn about my interests** or **Learn about my skills** menu tabs.  
 9-12 Graders: Select the **Learn more about myself** menu tab.  
 13-16 Graders: Select the **Assess or review my interests, skills, and values** menu tab.
- Step 6:** Choose the assessment you want to take.
- Step 7:** Enter the appropriate Batch Code for the assessment you plan to take. (Batch Codes will be provided by your Administrator/Instructor/Counselor).

	Batch Code
<i>Kuder Career Search with Person Match</i>	<u>I 787225 BFR</u>
<i>Kuder Skills Assessment</i>	<u>S 787224 BFR</u>
<i>Super's Work Values Inventory-revised</i>	<u>V 787226 BFR</u>

- Step 8:** Enter your current grade level, select a language, and click **GO!**
- Step 9:** Click through all the menu tabs in the system to explore the tools and information available to you.